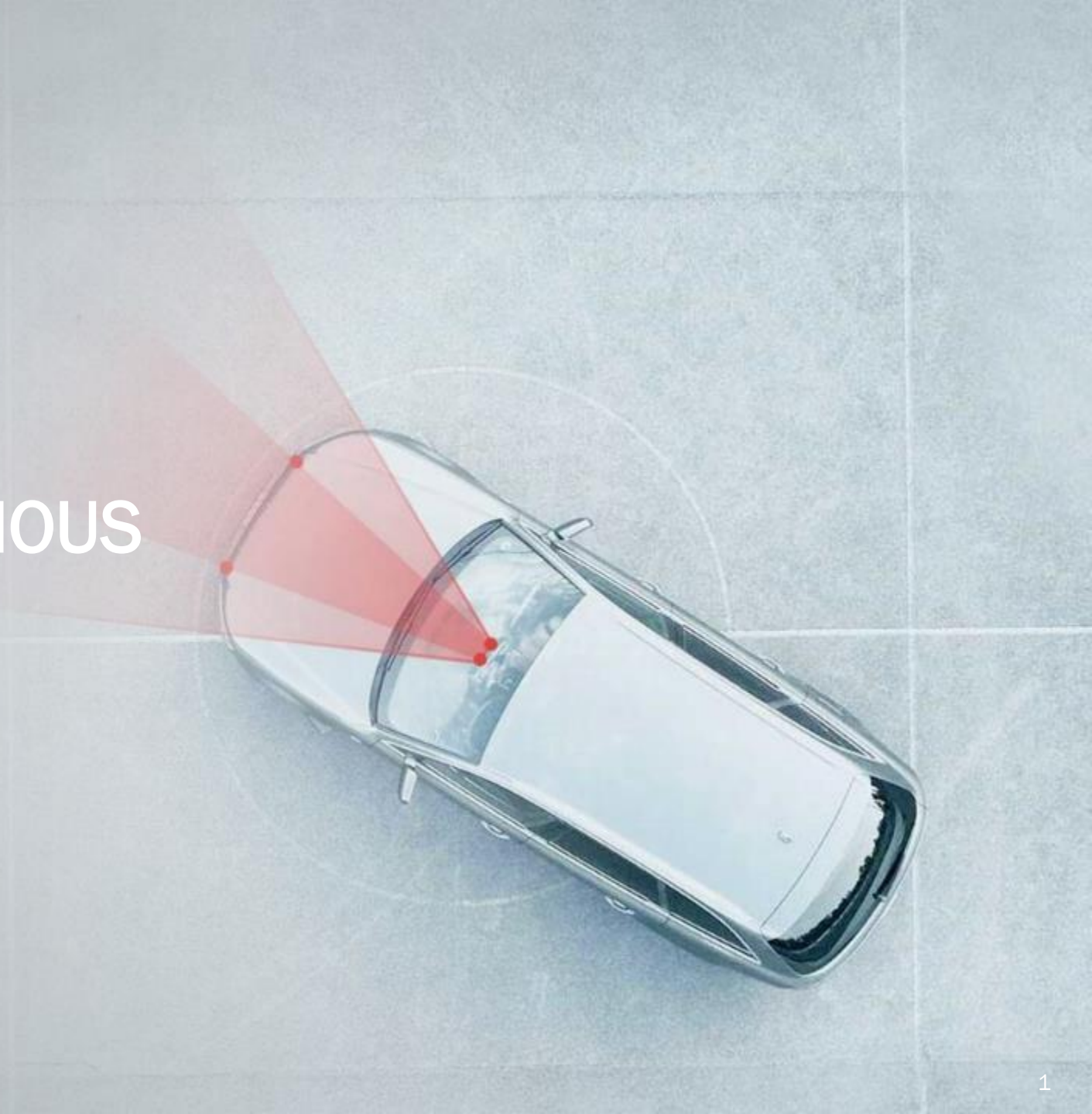




FORESIGHT AUTONOMOUS

NASDAQ/TASE - FRSX

February 2022

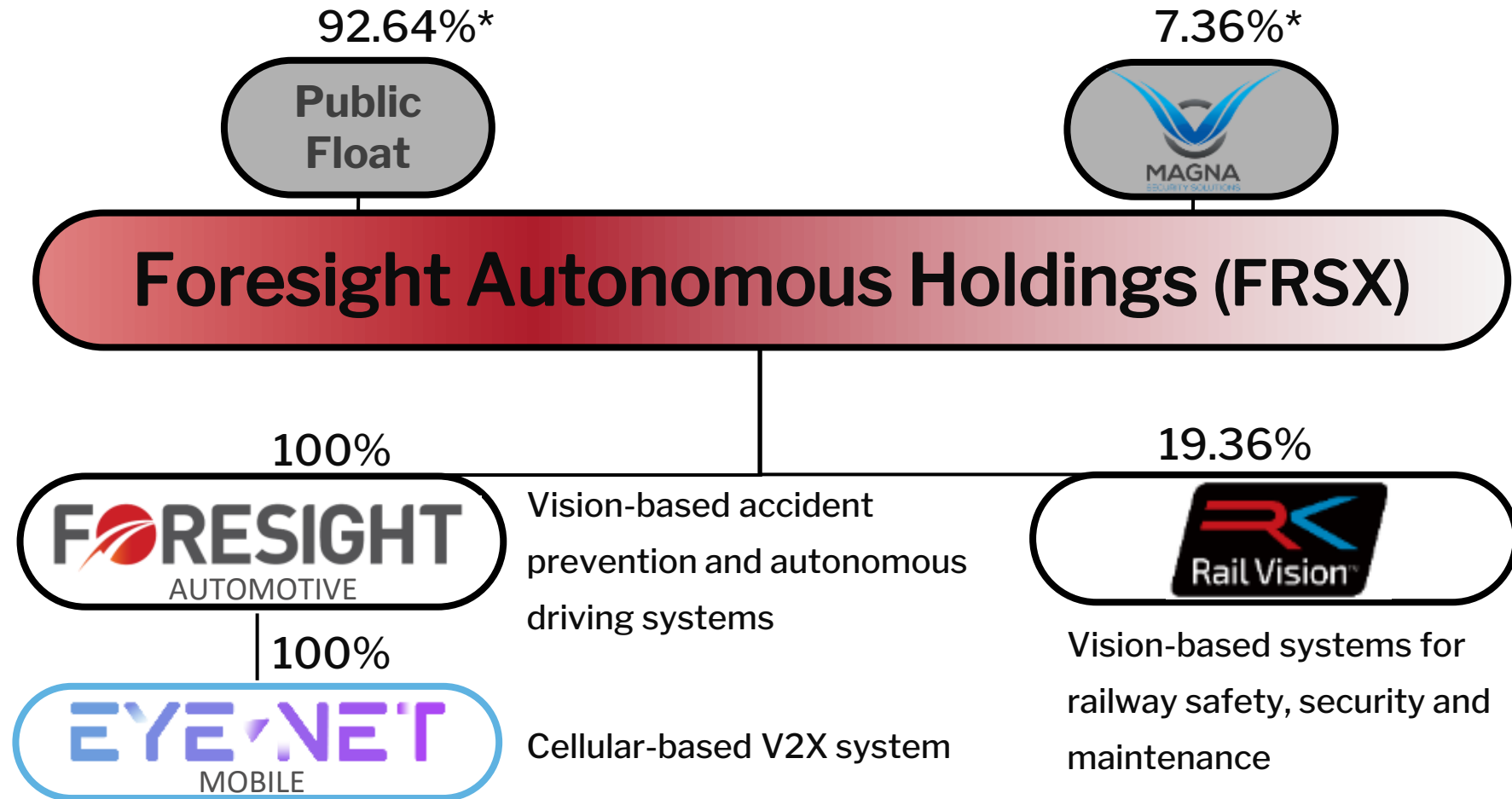


# FORWARD-LOOKING STATEMENTS

---

This presentation of Foresight Autonomous Holdings Ltd. (“Foresight” or the “Company”) contains “forward-looking statements” within the meaning of the Private Securities Litigation Reform Act and other securities laws. Words such as “expects,” “anticipates,” “intends,” “plans,” “believes,” “seeks,” “estimates” and similar expressions or variations of such words are intended to identify forward-looking statements. For example, Foresight is using forward-looking statements in this presentation when it discusses its massive growth opportunities across markets and high margin potential of software-focused solutions, and the expected revenue of Rail Vision from the commercial order of Knorr Bremse. Forward-looking statements are not historical facts, and are based upon management’s current expectations, beliefs and projections, many of which, by their nature, are inherently uncertain. Such expectations, beliefs and projections are expressed in good faith. However, there can be no assurance that management’s expectations, beliefs and projections will be achieved, and actual results may differ materially from what is expressed in or indicated by the forward-looking statements. Forward-looking statements are subject to risks and uncertainties that could cause actual performance or results to differ materially from those expressed in the forward-looking statements. For a more detailed description of the risks and uncertainties affecting the Company, reference is made to the Company’s reports filed from time to time with the Securities and Exchange Commission (“SEC”) including, but not limited to, the risks detailed in the Company’s annual report on Form 20-F, filed with the SEC on March 30, 2021. Forward-looking statements speak only as of the date the statements are made. The Company assumes no obligation to update forward-looking statements to reflect actual results, subsequent events or circumstances, changes in assumptions or changes in other factors affecting forward-looking information except to the extent required by applicable securities laws. If the Company does update one or more forward-looking statements, no inference should be drawn that the Company will make additional updates with respect thereto or with respect to other forward-looking statements.

# STRUCTURE



\*As of January 31, 2022

# FINANCIALS

---

NASDAQ– FRSX  
MARKET CAP  
\$202 million\*

SHARES OUTSTANDING\*  
322.65 million shares  
64.53 million ADS\*\*

CASH\*  
\$49 million

GAAP SHAREHOLDERS'  
EQUITY\*  
\$51.9 million

\*As of September 30, 2021

\*\* 1 ADS = 5 ordinary shares

# FORESIGHT AUTOMOTIVE AT A GLANCE

## Advanced Safety Driver Assistance and Autonomous Driving Vision Solutions



Employees

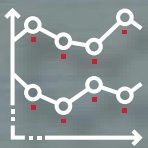
**~75**

Mainly R&D



**10**

Patents



Traded:

**TASE, NASDAQ  
(FRSX)**



**Core Technology**

Software & Algorithms



**Mature Technology**

adapted from operational  
surveillance applications



Founded:

**2015**



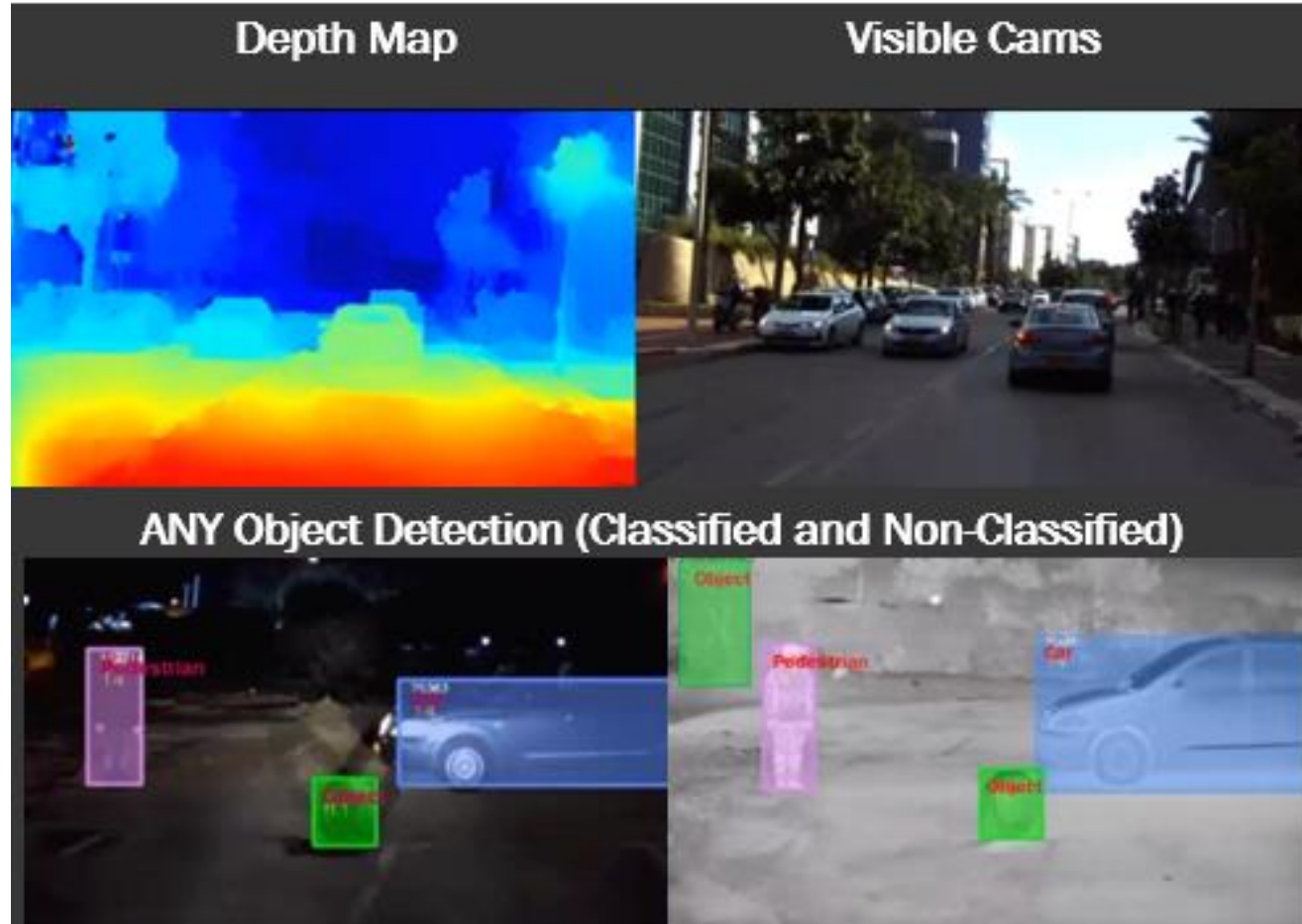
**Value Proposition**

3D perception stereo solutions



# TECHNOLOGY – THE BASICS – STEREOSCOPY

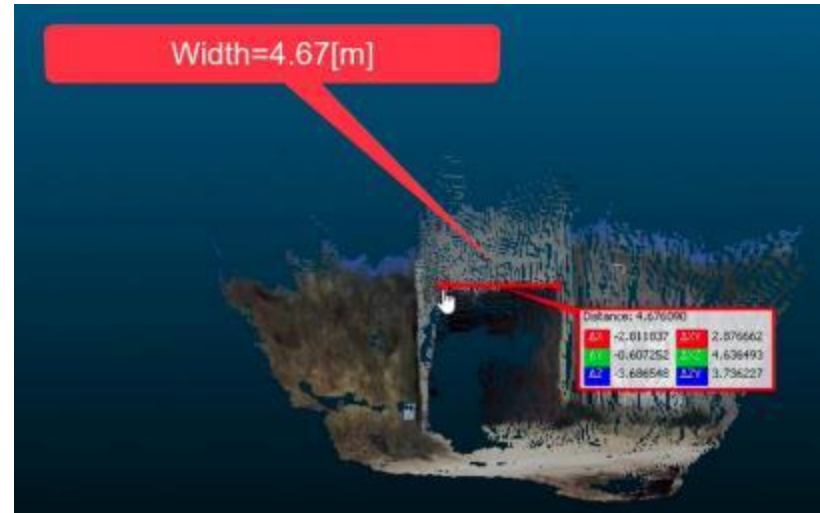
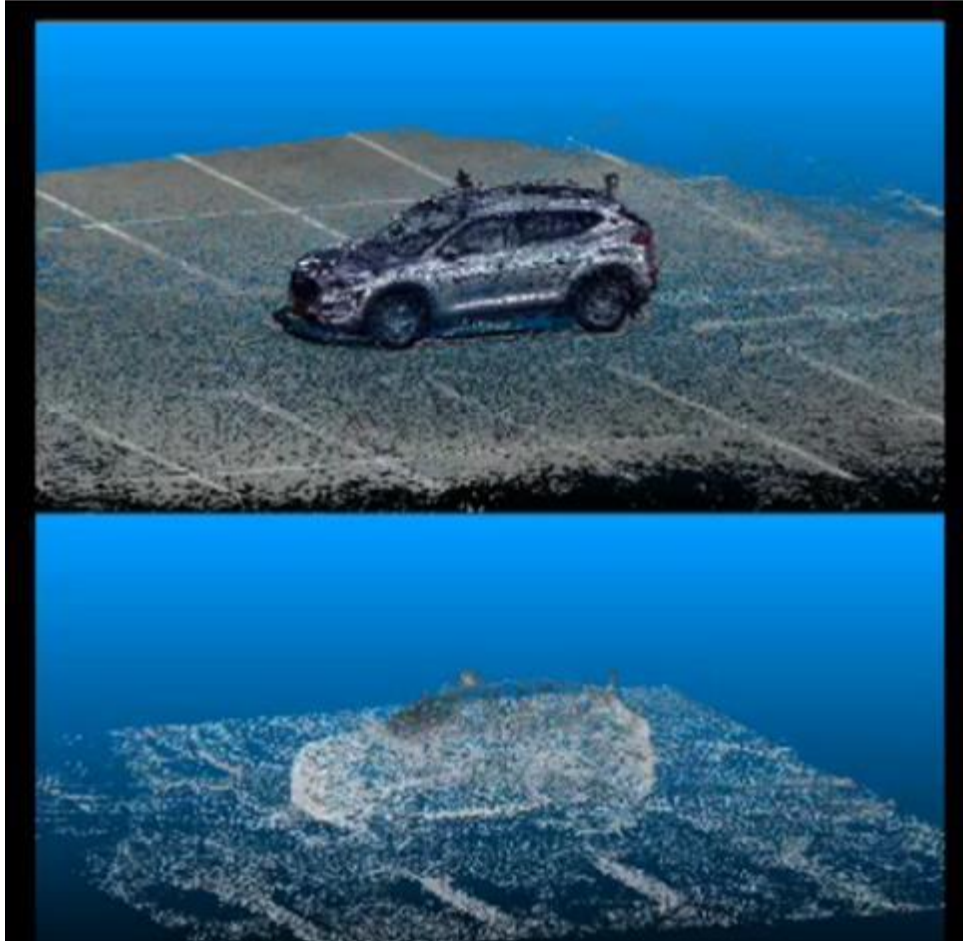
Uses two synchronized cameras to generate a depth map and provide accurate obstacle detection and classification



- Detection of ANY object
- Accurate size, location and distance of object.
- Adding deep neural networks (DNN) for object recognition
- Classification of objects

# TECHNOLOGY - 3D PASSIVE POINT CLOUD

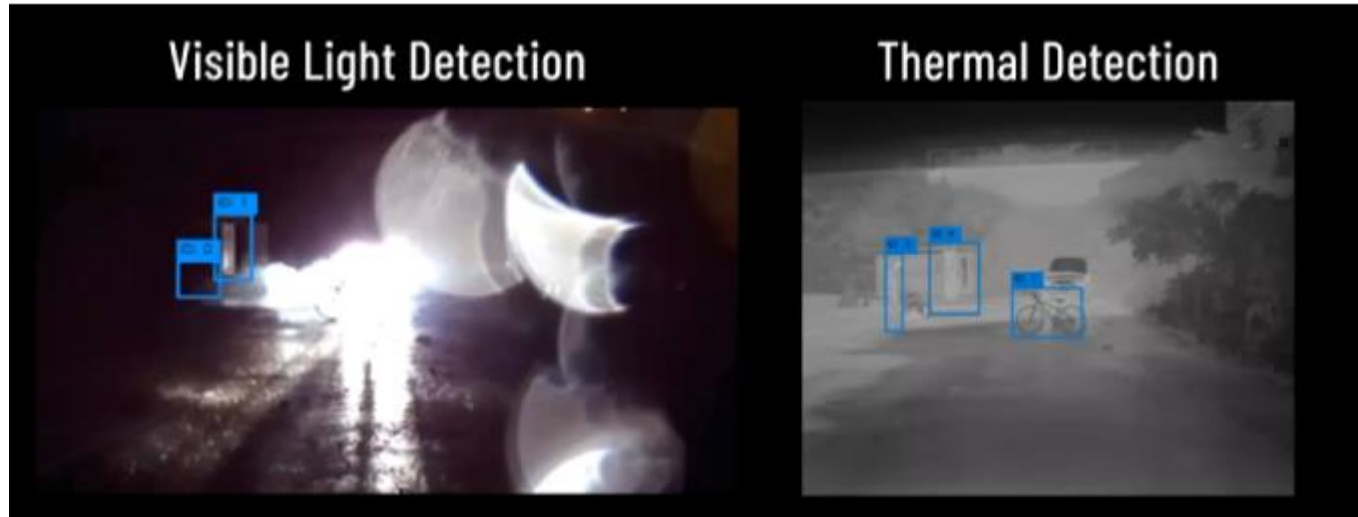
Provides 3D data for obstacle detection, terrain analysis and sensor fusion



- Generates an accurate depth map for both visible and LWIR spectrum
- Converted to a high-resolution 3D point cloud
- Provides rich and accurate per pixel information

# TECHNOLOGY - INFRARED THERMAL CAMERAS

Relies on emissivity of different objects, as opposed to sensors of other systems, which rely only on reflective light



- Detection in harsh weather and lighting conditions
- Native detection of pedestrians and animals





# MARKET TRENDS – STRETCHING SENSOR CAPABILITIES

## Traditional Stereo Systems



## Foresight's Stereo Separated Cameras



### Rigid beam mounting

### Separated cameras

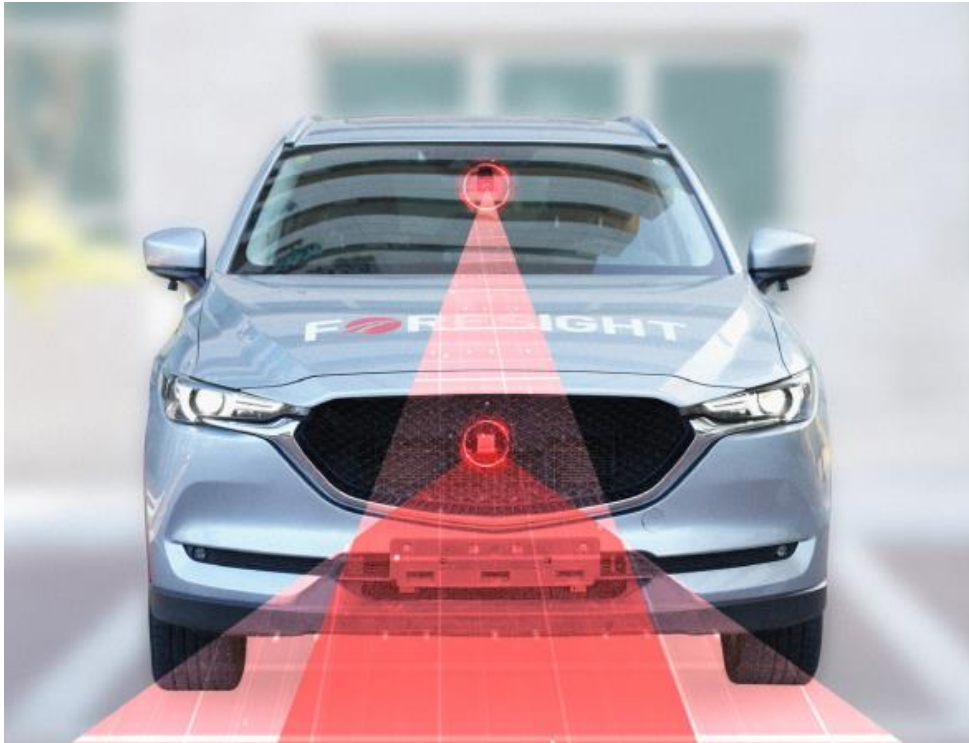
#### Advantage of camera separation:

- Longer distances
- Higher distance accuracy
- Flexible placement / easy installation
- Visible and IR cameras



# MARKET TRENDS – ENHANCING EXISTING ADAS SYSTEMS

## From Existing Mono Cameras with Different Fields of View (FOV)



Narrow FOV



Wide FOV

### ➤ Value Proposition:

- Leverage existing mono cameras to create stereo pairs
- Enhance detection and robustness and add additional safety layer
- Software-only solution

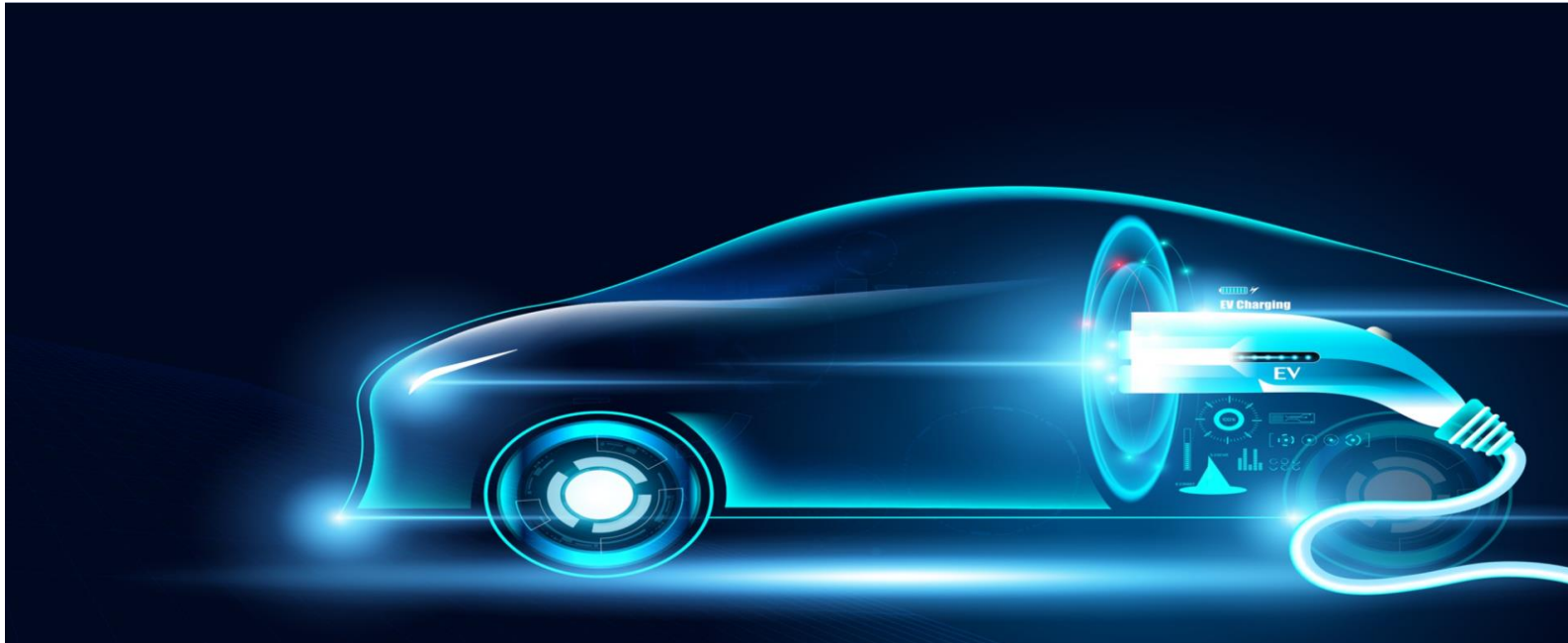
### ➤ Benefits :

- No additional sensor hardware
- Low cost
- Leverage Foresight's innovative auto-calibration algorithm

# MARKET TRENDS – EV & AUTONOMOUS VEHICLES

---

- Electric Vehicles tightly linked to Autonomous Vehicles
- Regulation – global move towards EVs
- Passive technology - less energy consumption



# MARKETS

---



**Autonomous Vehicles**



**Military Vehicles**



**Industrial Vehicles**



# MARKET TRACTION – CUSTOMER ENGAGEMENTS

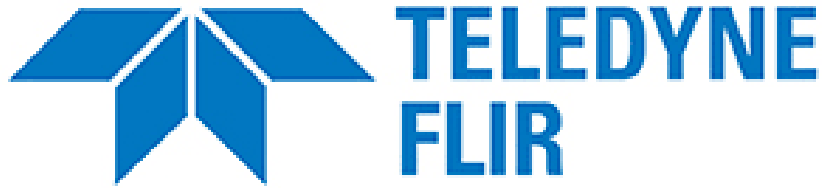
- Commercial agreement with Elbit System
- Successfully completed proof of concept (POC) with a leading European OEM
- Conducting multiple POC projects with leading OEM/Tier 1's in North America, Japan, Europe and China
- 16 Prototype kits delivered to OEM/Tier 1's worldwide
- Dozens of leads with OEMs/Tier 1's worldwide
- Strategic cooperation agreements with key industry players





# MARKET TRACTION – PARTNERS/CUSTOMERS

---



Leading European OEM



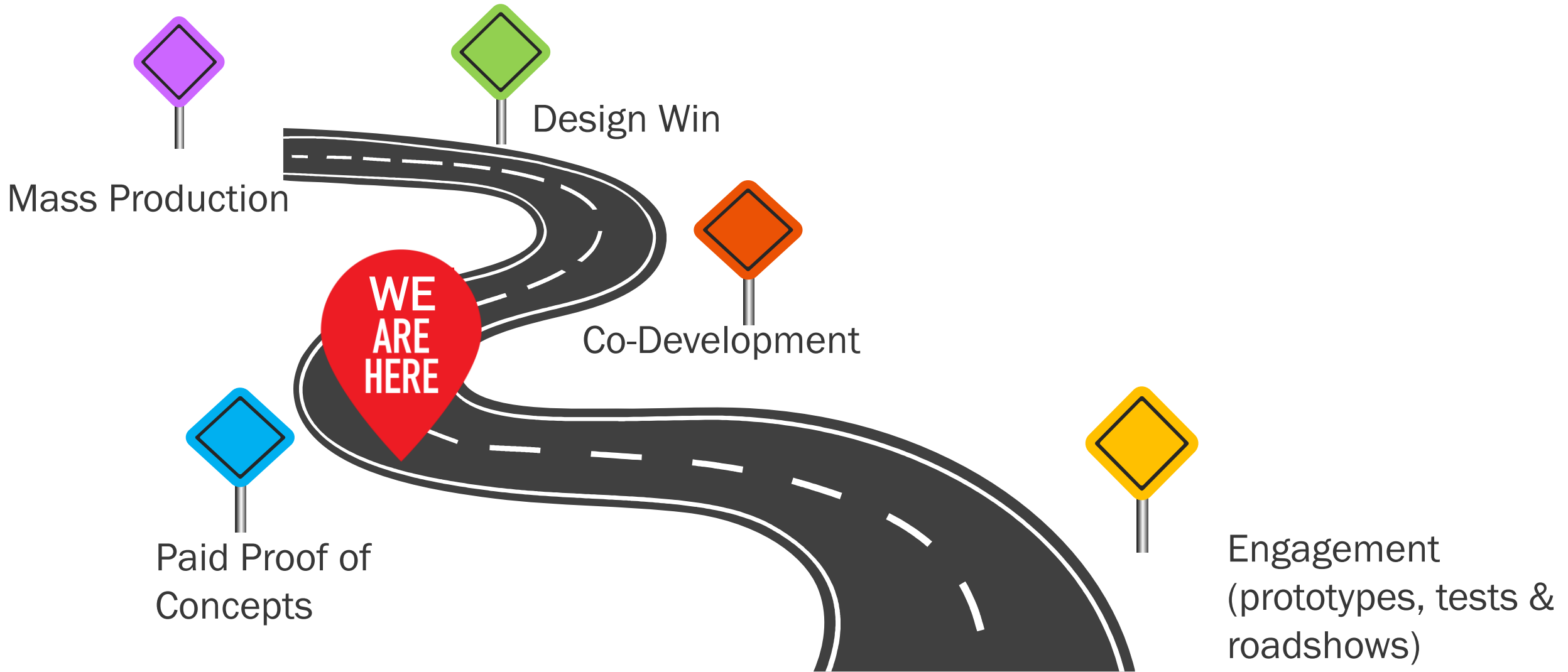
# CHINESE MARKET

- China is largest automotive market in the world\*
- Backed up with strong government support and shifting to global vehicle export
- Looking for disruptive technology to enable high level of autonomy
- Latest market traction:
  - Established a fully owned local subsidiary in China – Foresight Changzhou Automotive Ltd. – enabling local business development and partnerships
  - Multiple proof of concepts projects with leading Chinese vehicle manufacturers
  - MOU for cooperation with Wuhu Chery Technology Co., a global Chinese vehicle manufacturer, and Guide IR
  - Cooperation agreement with a Chinese leading Tier One, Sunway-AI Technology (Changzhou) Co., Ltd., to commercialize autonomous technologies to the Chinese agriculture market



\*According to the International Trade Administration <https://www.trade.gov/country-commercial-guides/china-automotive-industry>

# SALES CYCLE



# EYE-NET MOBILE AT A GLANCE

Cellular-based V2X accident prevention solution (C-V2X)



Employees

**17**

Mainly R&D



**5**

Patents



100% fully owned  
by Foresight  
Automotive



**Core Technology**

Software & Algorithms



Founded:

**2018**



**Value Proposition**

Provide real-time alerts about  
predicted collisions in all  
weather and lighting conditions

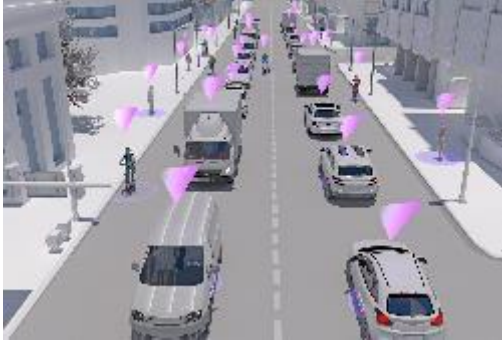
# MARKET TRACTION

- 1<sup>st</sup> commercial agreement – with SaverOne 2014 Ltd. to integrate & commercialize Eye-Net into their solution for cell phone distracted driving
- Multiple pilot projects in Japan with leading Japanese multinational companies, for example:
  - Integration into an OEM vehicle for a smart city project
  - Advanced dashboard cameras
  - IoT services
- Multiple pilots with European cellular provider to conduct technological demonstrations over 5G network
- Conducting a pilot project with an Indian fleet telematics company
- Distribution agreements in Europe, Japan and South America



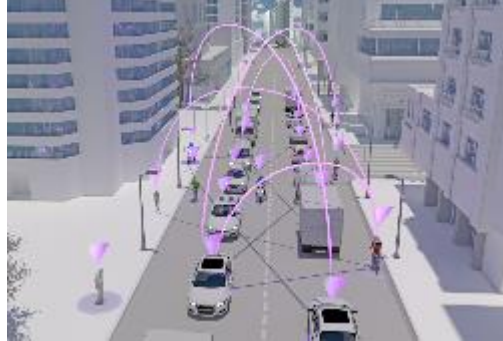


# HOW EYE-NET™ PROTECT WORKS



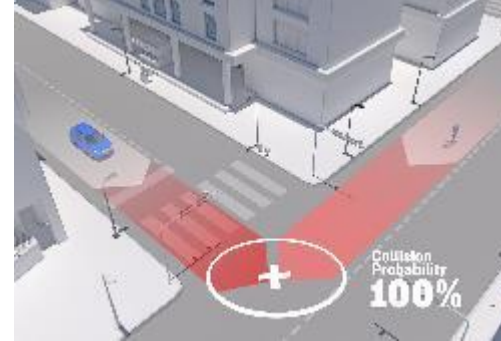
Each of the installed mobile devices is aware of its location and constantly transmits it to Eye-Net™ servers

1



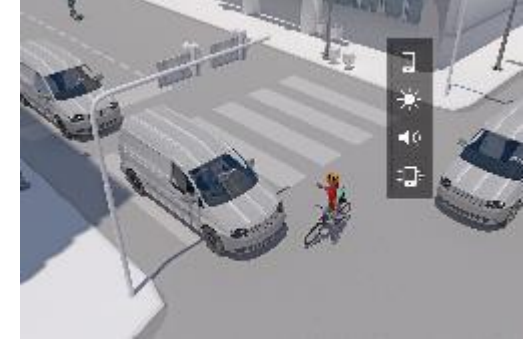
The Eye-Net™ servers send the location of other devices in the vicinity to each device, effectively making devices aware of the road users around it

2



The Eye-Net™ application constantly searches for potentially dangerous conditions or collisions

3



Once a potential collision is detected, immediate visual and audio alerts are sent out to all users involved

4

# RAIL VISION AT A GLANCE

## Obstacle detection & classification systems for the railway industry



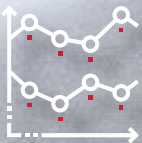
Employees

**65**



Founded:

**2016**



**FRSX owns 19.36%  
of Rail Vision**



### Core Technology

Electro Optics, Deep  
Learning Software &  
Hardware



### Market Traction

- First commercial order & commercial agreement
- Strategic investment from Knorr- Bremse GmbH



### Value Proposition

Provide high-end solutions to  
the core challenges of the rail  
industry

# ABOUT RAIL VISION

---

- Technology company engaged in the design, development and manufacture of the first cognitive vision and safety system for the railway industry
- Main focus:
  - Safety: State-of-the-art long-range obstacle detection system
  - Provide condition-based maintenance
- Strategic investment by Knorr-Bremse Systeme für Schienenfahrzeuge GmbH – a leading Tier-One supplier in the railway industry Original investment of \$10 million in March 2019, followed by an additional investment of \$10 million in October 2020.
- First commercial order - Received order of 0.5 million Euro from leading European train operator for remote shunting prototype system in April 2020. In October 2020, signed a commercial agreement in which Knorr Bremse will act as an integrator for the leading train operator for a potential of 2.3 million Euro, with an optional expansion of 3.5 million Euro.
- Second commercial order - Rail Vision Enters Electrically Powered Light Rail Vehicle with Order from Knorr-Bremse - Revenue from this order is expected to total approximately 0.4 million Euro.

# COMPANY HIGHLIGHTS



**Game changing software-oriented computer vision approach, advancing ADAS and autonomous driving solutions**

**Proprietary auto calibration and fusion solutions drive superior range and detection across weather conditions**

**Strong IP protection across the entire suite of technology offerings, including Eye-Net's software solution**

**Massive growth opportunities across markets and high margin potential of software-focused solutions**

**Partnerships with blue-chip names across industries and engagements with highly attractive customers**



A white SUV is driving on a winding asphalt road that curves through a mountainous landscape. In the background, a building sits atop a hill, partially obscured by mist or smoke. The scene is atmospheric and scenic.

# FORESIGHT

# THANK YOU!

[Info@foresightauto.com](mailto:Info@foresightauto.com)

[www.foresightauto.com](http://www.foresightauto.com)